



Arizona PTA E-News - July 2023 #1

Outstanding leaders go out of their way to boost the self-esteem of their personnel. If people believe in themselves it's amazing what they can accomplish. - Sam Walton



2023-2024 Required Officer Training

Every fiscal year, local PTA/PTSA unit officers in Arizona must complete approved training by September 30th. Members taking office after September 30th must submit payment for and complete the online version of training within 45 days of taking office. [2023 Online Officer Training | Arizona PTA \(azpta.org\)](#)



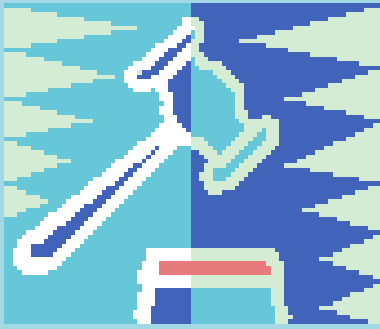
Outstanding Interpretation Winners Celebration

National PTA will honor the top seven Reflections award winners and acknowledge all national winners during the 2022-2023 Outstanding Interpretation Winners Celebration, to air via [National PTA's YouTube channel](#) on Wednesday, July 19, 2023, at 7:00 p.m. EDT. [\(5\) 2022-2023 Outstanding Interpretation Reflections Winner Celebration - YouTube](#)

Your Arizona PTA Elected Officers

Arizona PTA is proud to introduce our elected Arizona PTA officers that will be working with you this fiscal year. We thank them for their volunteer service.

President - Sara Gagliardi
Vice President - Danielle Padia



Vice President of Membership - Amanda Reyes
Secretary - Terrie Minnick
Treasurer - Jenny Chavez
Southwest Maricopa Region Director - Kristin Bumford
Southern Region Director - Tiffany Rogers



Membership Information

The beginning of the school year is the perfect time to hold your first membership drive of the year. Start planning one today! Then throughout the year remember to include a membership ask at every PTA/PTSA event since membership recruitment and retention should be done year-round.

All local PTA/PTSA membership dues need to be submitted to Arizona PTA by the 20th of each month. Before submitting dues, be sure all members for your PTA/PTSA have been added to the Givebacks/MemberHub website. Membership dues are \$5.50 per person. National PTA receives \$2.25, and Arizona PTA retains \$3.25.

Don't forget all local PTA/PTSA unit officers must be members!

*There will be no increase in dues for the 2023-2024 membership year.

[Membership Recruitment Tools - Run Your PTA | National PTA MemberHub Help Center](#)

If you have not already, be sure to submit your Officer's List here ASAP:

<https://www.azpta.org/leaders-documents>



Thrive Online Learning

Thrive is PTA's new online learning community for volunteers. Thrive brings

PTA leadership development to you. Through Thrive's engaging, short courses, you can take training at your own time. [Thrive Learning Community - Run Your PTA | National PTA](https://www.thrivelearning.com)

Thank You Sponsors and Exhibitors!

Thank you to all of our 2023 Arizona PTA Convention Sponsors & Exhibitors!!! Additional Convention supporters/donors can be found on our website at: <https://www.azpta.org/2023-convention-schedule> Our supporters are all very much appreciated!!!



Calendar

7/2023 - Park and Recreation Month - [July is Park and Recreation Month | National Recreation and Park Association \(nrpa.org\)](#)

7/2023 - Disability Pride Month - [Why and How to Celebrate Disability Pride Month 2023 - The Arc](#)

7/20/2023 - Local PTA/PTSA Units July Monthly Memberships are due [MemberHub Help Center](#)

8/15/2023 - AIM Insurance Payment Due for local PTA/PTSA units. [AIM - Association Insurance Management, Inc. > My Policy \(aim-companies.com\)](#)

9/30/2023 - Arizona PTA Teacher of the Month Applications Due [Teacher of the Month | Arizona PTA \(azpta.org\)](#)

Visit our
Website

Arizona PTA | 2721 N. 7th Avenue, Phoenix, AZ 85007

[Unsubscribe office@azpta.org](mailto:office@azpta.org)

[Update Profile](#) | [Constant Contact Data Notice](#)

Sent by office@azpta.org powered by



Try email marketing for free today!